



COLLA GUIDE™

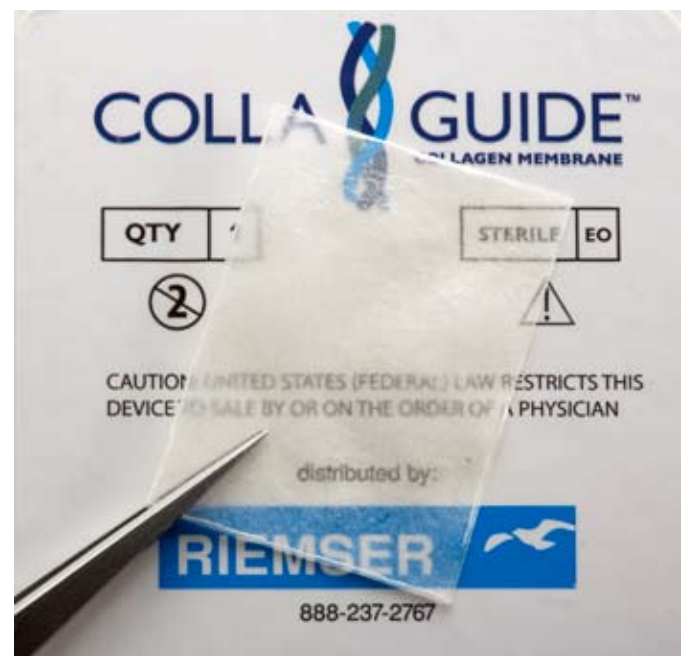
COLLAGEN MEMBRANE

The Collagen Membrane that Offers Excellent Handling for GTR and GBR

RIEMSER provides a new dental collagen membrane, CollaGuide, which is:

- **Easy to handle**
because it is resilient
- **Easy to place**
because it is translucent
- **Convenient to use**
because it is offered in 3 sizes

CollaGuide is manufactured with no chemical cross-linking, creating an excellent healing environment for both Guided Tissue Regeneration (GTR) and Guided Bone Regeneration (GBR) usage. It is derived from closed-herd bovine sources to ensure high purity.



Available in 3 convenient sizes: 15x20mm, 20x30mm and 30x40mm

RIEMSER 

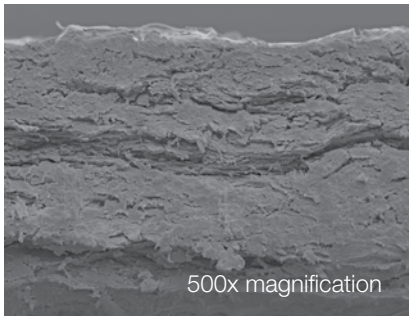
Developed and manufactured
by Kensey Nash Corp

COLLA GUIDE™

COLLAGEN MEMBRANE

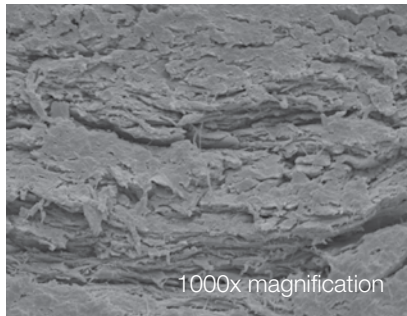


The Collagen Membrane with Flexibility and Malleability



500x magnification

Its dense fibrous structure creates a porosity designed to retard epithelial downgrowth and prevent gingiva connective cell migration into the wound site.



1000x magnification

As the barrier resorbs, fibrils that make up the membrane separate, creating a matrix that slows fibroblasts and promotes cell attachment.

- Adheres to tissue and maintains structural integrity (memory)
- Easily placed with sutures or tacks
- Versatility for use in GTR and GBR indications

CollaGuide is available in sterilized double blister packs in 3 sizes:



15 mm x 20 mm
20650-01

20 mm x 30 mm
20650-02

30 mm x 40 mm
20650-03



RIEMSER



Developed and manufactured
by Kensey Nash Corp

Distributed by
RIEMSER, Inc
P.O. Box 12339
Research Triangle Park, NC 27709-2339
P: 1.888.237.2767 (1.888.CERASORB)
F: 919.941.9775
www.RIEMSERdental.com